



NO DESIGN IS  
POSSIBLE UNTIL  
THE MATERIALS  
WITH WHICH  
YOU DESIGN ARE  
COMPLETELY  
UNDERSTOOD





colab.ae  
Colab



colab.ae ARTECRAFT: Log Fusion

Inspired by the natural beauty and the free flowing lines of wood, ARTECRAFT have created a range called Log Fusion. Log Fusion was created from the thought process of combining the two most stunning assets of our planet - Earth and Water - wherein wood represents Earth and the resin represents Water.

The end result is a refined combination of wood and resin that showcases the charm of the inherent grains of wood - cut longitudinal or latitudinal - which is then further cast with resin to complete the process. The two are completely vacuum cast without any gluing or fixing in between. The final product is one single panel.

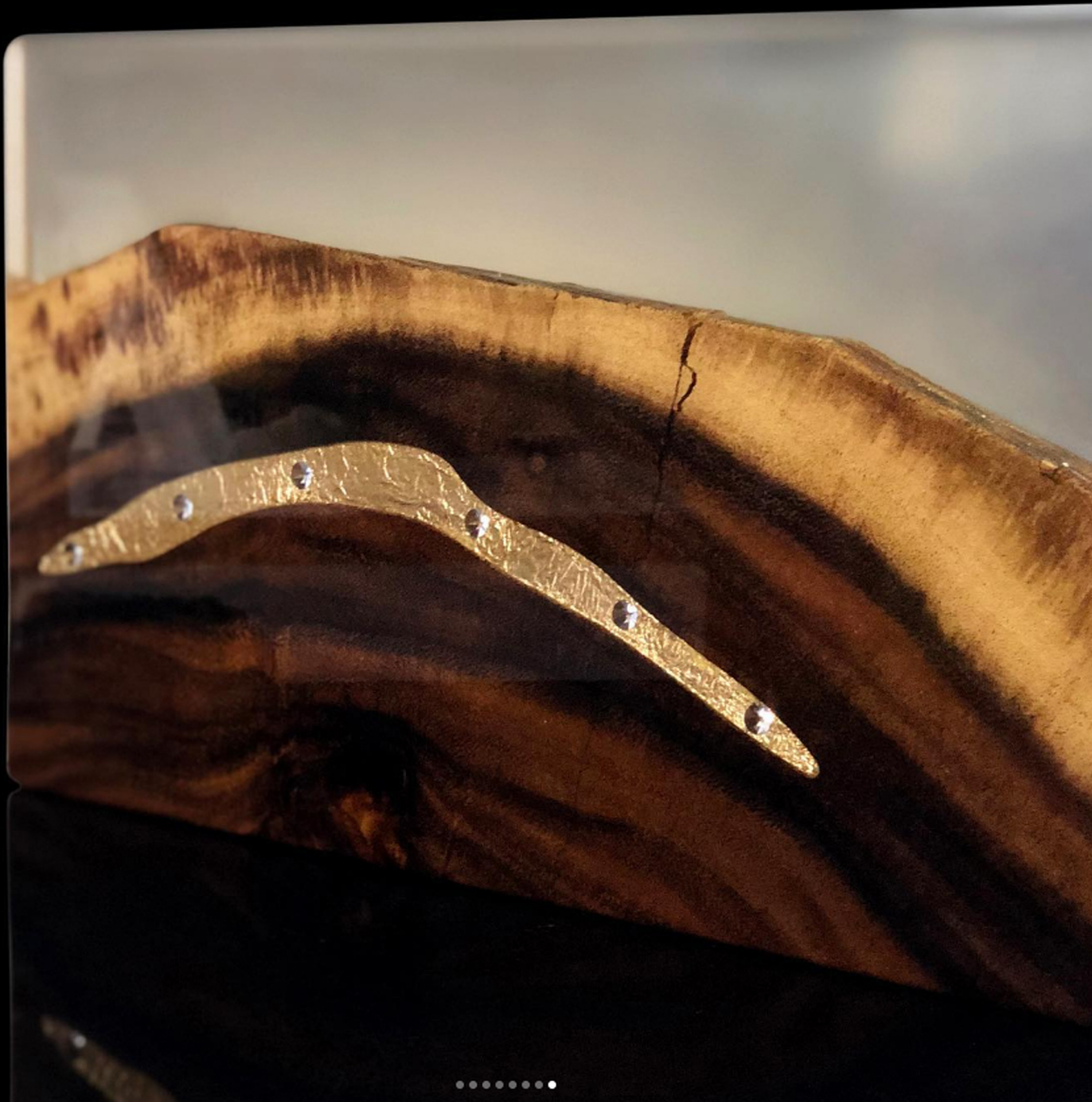
Come and view some examples of this wonderful material at Colab!

.

.

#Colab #DubaiDesignDistrict #d3 #thisisd3 #Dubai #MyDubai #Material #Library #Design #Lab #DesignInspiration #Process #InteriorDesign #Architecture #Innovation #Product #Database #ProductSourcing #Future #MaterialDriven #MaterialKnowledge #MaterialInnovation #MaterialScience #MaterialLab #DesignBoom

Edited · 249w



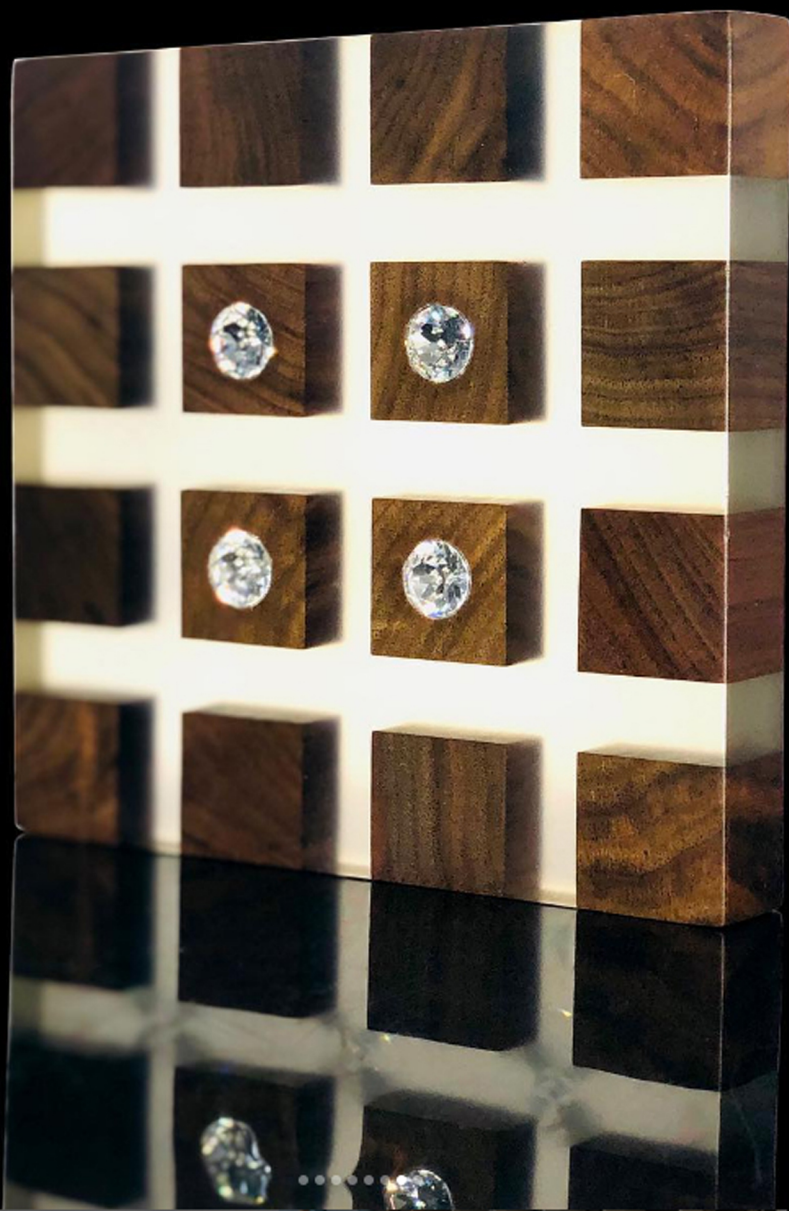
51 likes

November 28, 2019



Add a comment...

Post



colab.ae  
Colab



colab.ae ARTECRAFT: Log Fusion

Inspired by the natural beauty and the free flowing lines of wood, ARTECRAFT have created a range called Log Fusion. Log Fusion was created from the thought process of combining the two most stunning assets of our planet - Earth and Water - wherein wood represents Earth and the resin represents Water.

The end result is a refined combination of wood and resin that showcases the charm of the inherent grains of wood - cut longitudinal or latitudinal - which is then further cast with resin to complete the process. The two are completely vacuum cast without any gluing or fixing in between. The final product is one single panel.

Come and view some examples of this wonderful material at Colab!

.

.

#Colab #DubaiDesignDistrict #d3 #thisisd3 #Dubai #MyDubai #Material #Library #Design #Lab #DesignInspiration #Process #InteriorDesign #Architecture #Innovation #Product #Database #ProductSourcing #Future #MaterialDriven #MaterialKnowledge #MaterialInnovation #MaterialScience #MaterialLab #DesignBoom

Edited · 249w



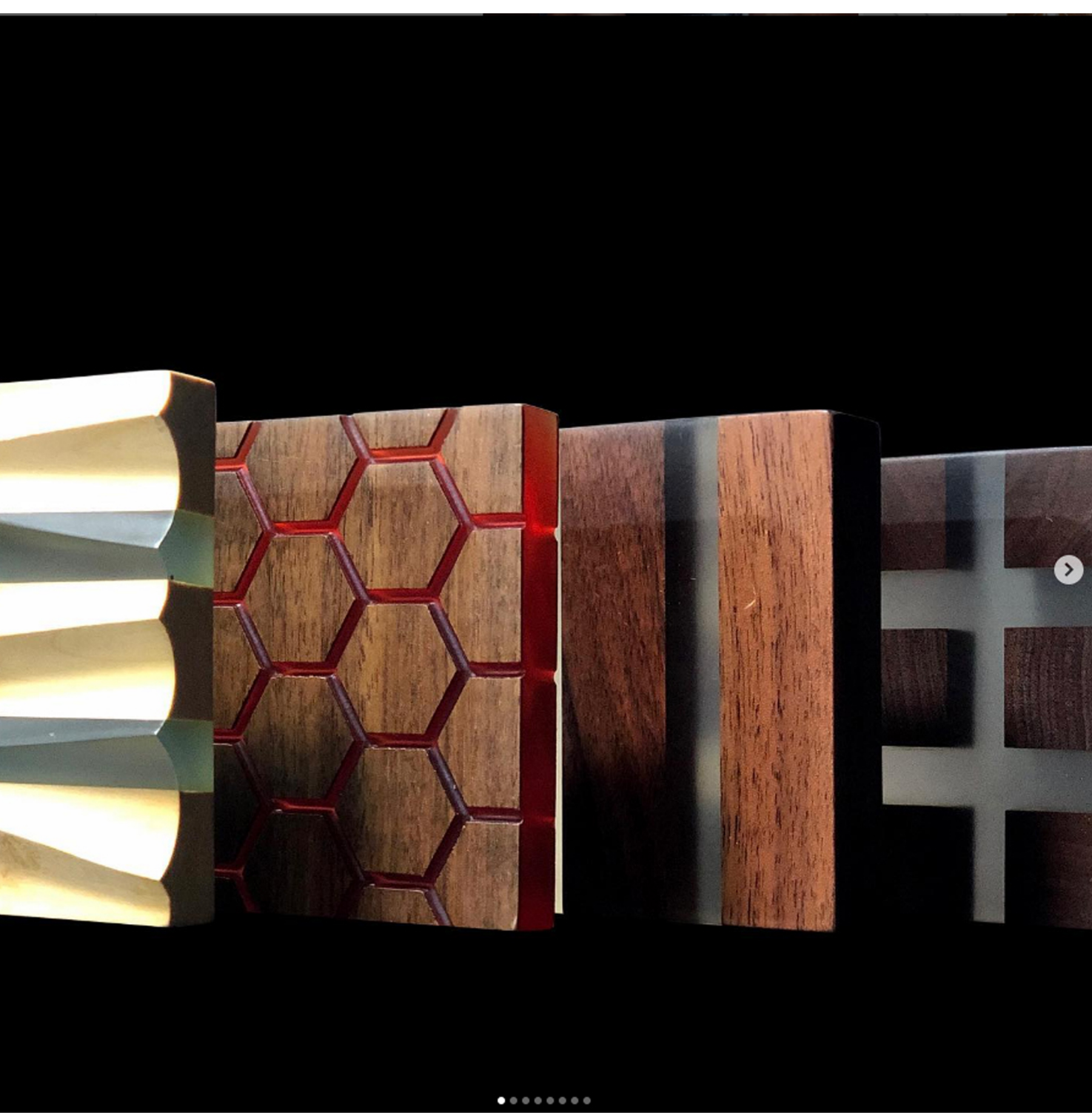
51 likes

November 28, 2019



Add a comment...

Post



colab.ae  
Colab



colab.ae ARTECRAFT: Log Fusion

Inspired by the natural beauty and the free flowing lines of wood, ARTECRAFT have created a range called Log Fusion. Log Fusion was created from the thought process of combining the two most stunning assets of our planet - Earth and Water - wherein wood represents Earth and the resin represents Water.

The end result is a refined combination of wood and resin that showcases the charm of the inherent grains of wood - cut longitudinal or latitudinal - which is then further cast with resin to complete the process. The two are completely vacuum cast without any gluing or fixing in between. The final product is one single panel.

Come and view some examples of this wonderful material at Colab!

.

#Colab #DubaiDesignDistrict #d3 #thisisd3 #Dubai #MyDubai #Material #Library #Design #Lab #DesignInspiration #Process #InteriorDesign #Architecture #Innovation #Product #Database #ProductSourcing #Future #MaterialDriven #MaterialKnowledge #MaterialInnovation #MaterialScience #MaterialLab #DesignBoom

Edited · 249w



51 likes

November 28, 2019



Add a comment...

Post